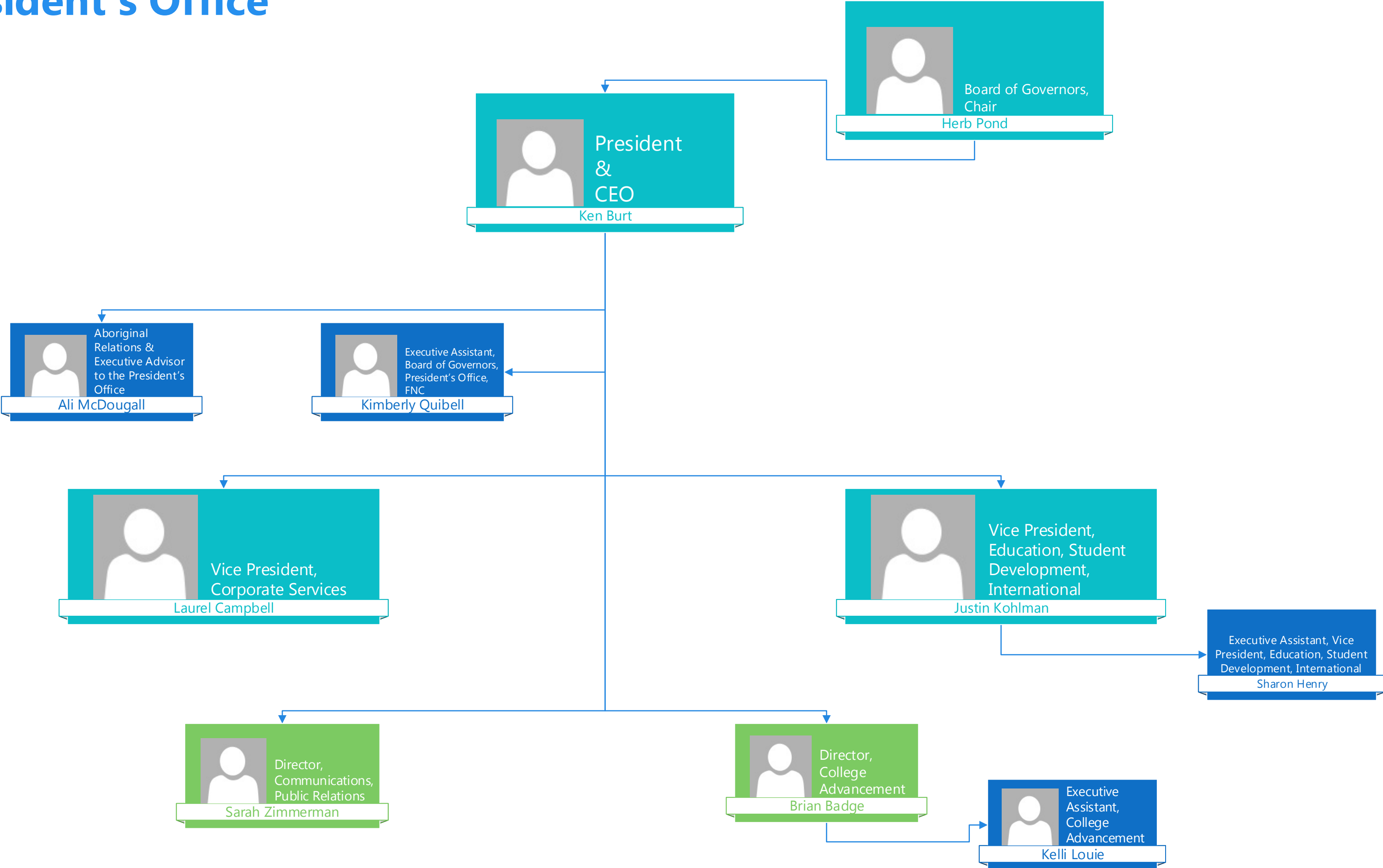


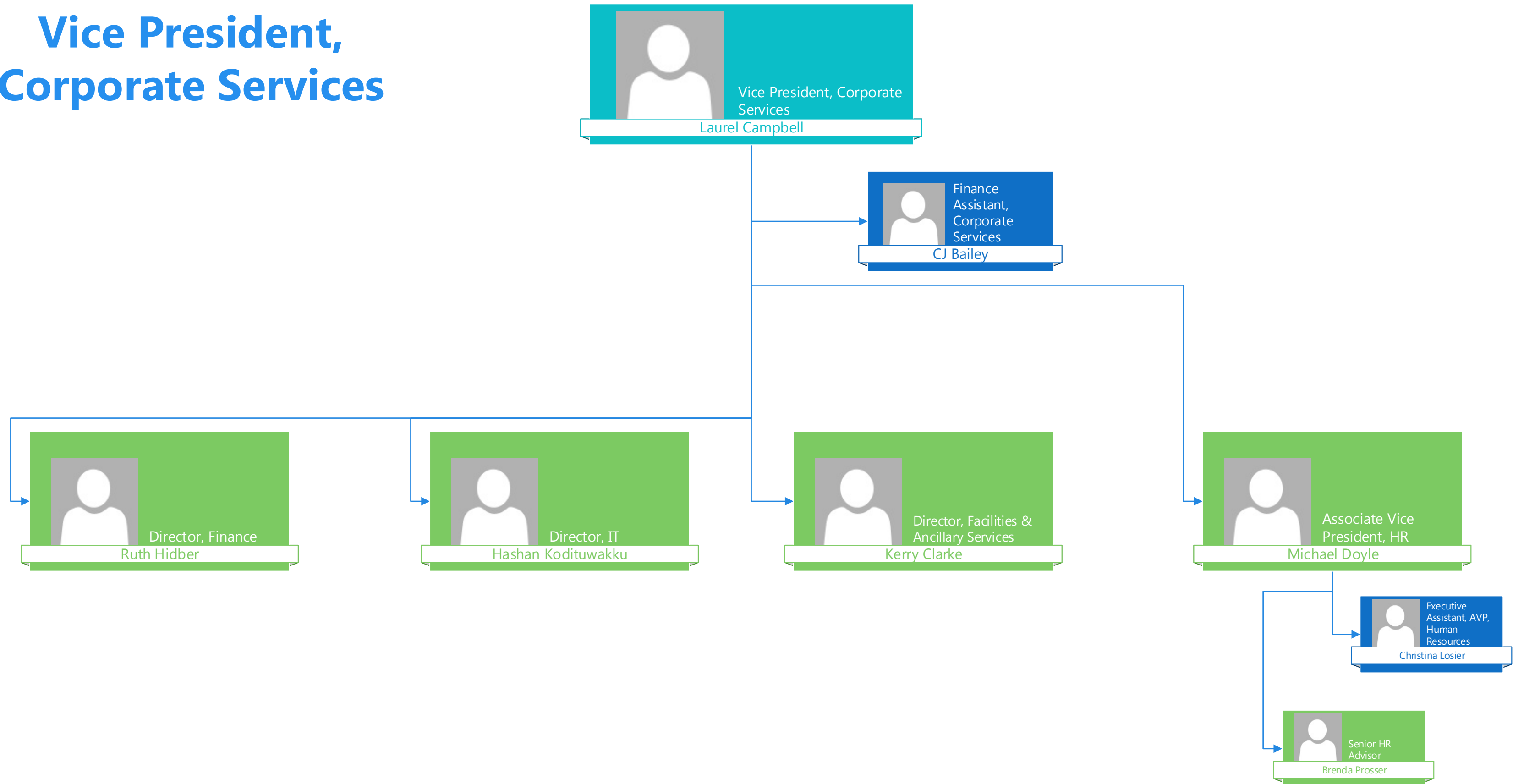
* Portfolio: Business Administration (ABT, Public);
CCP, ABE, ESL, Literacy, Libraries

**Portfolio: UC, ACE, CRIM, SSW, ECE, FNFA, HCA,
NCBNP, PN, ICMH, HLP, SEA

President's Office



Vice President, Corporate Services



Vice President, Education, Student Development, International



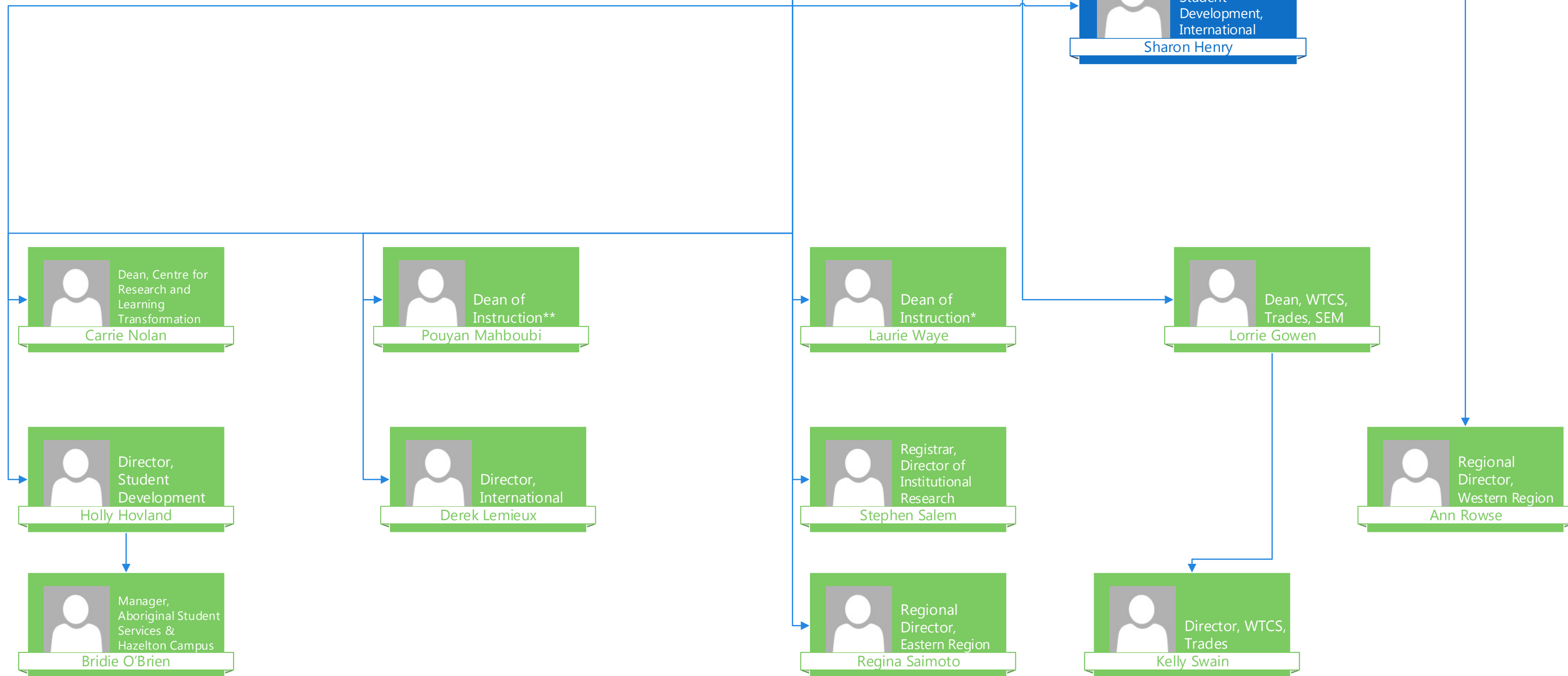
Vice President,
Education, Student
Development,
International

Justin Kohlman



Executive Assistant,
VP Education,
Student
Development,
International

Sharon Henry



* Portfolio: Business Administration (ABT, Public);
CCP, ABE, ESL, Literacy, Libraries
**Portfolio: UC, ACE, CRIM, SSW, ECE, FNFA, HCA,
NCBNP, PN, ICMH, HLPR, SEA