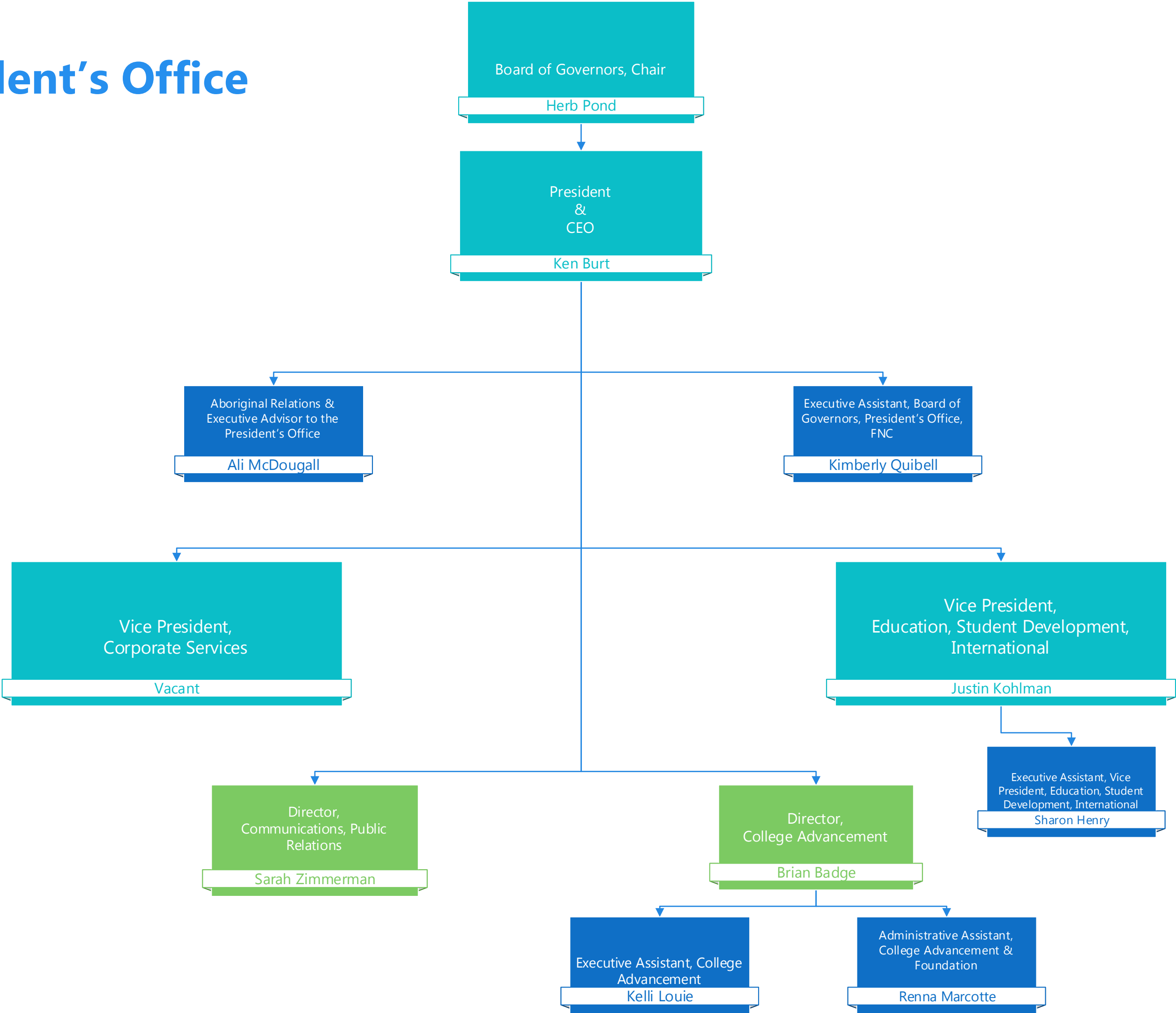


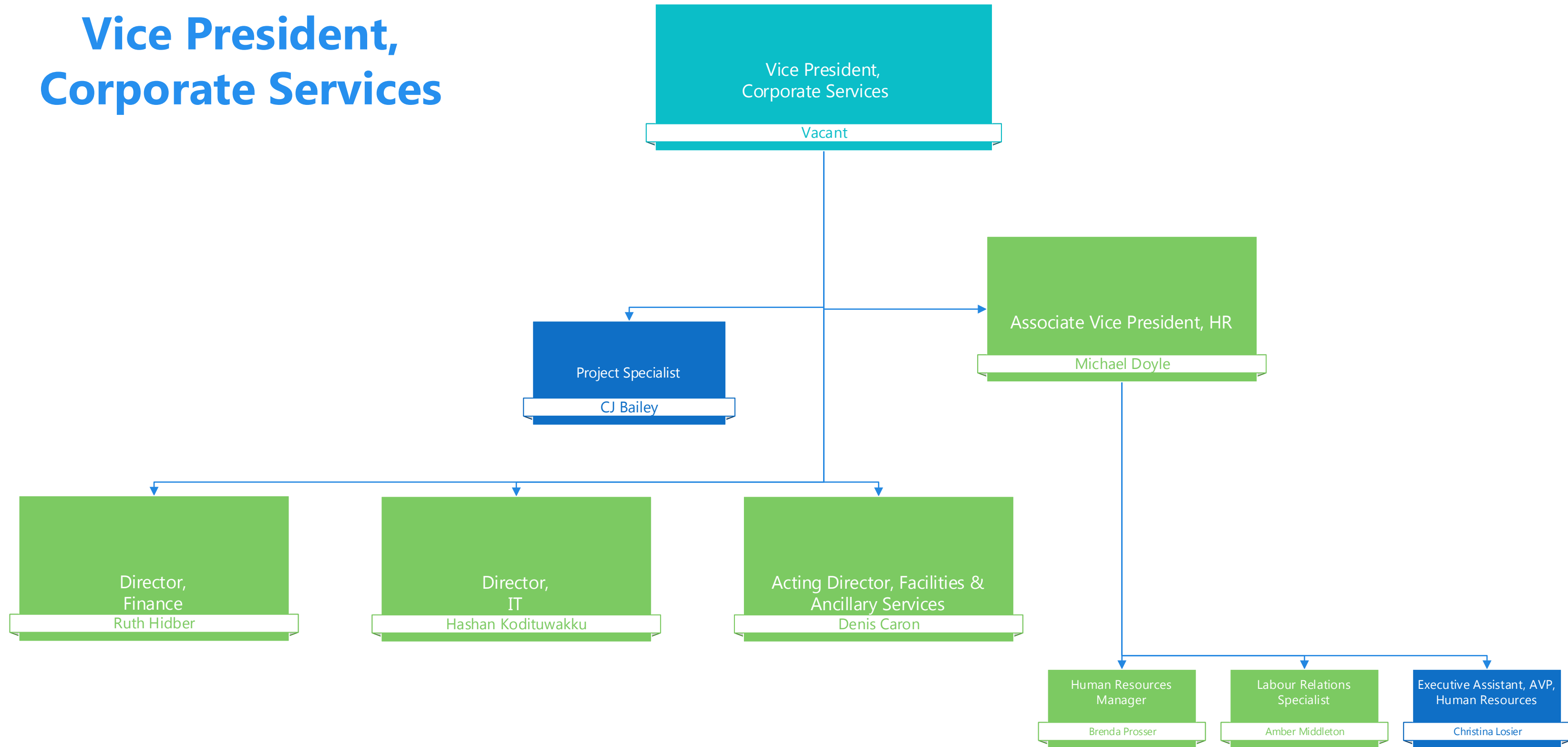
\* Portfolio: Business Administration (ABT, Public); CCP, ABE, ESL, Literacy, Libraries

\*\*Portfolio: UC, ACE, CRIM, SSW, ECE, FNFA, HCA, NCBNP, PN, ICMH, HLP, SEA

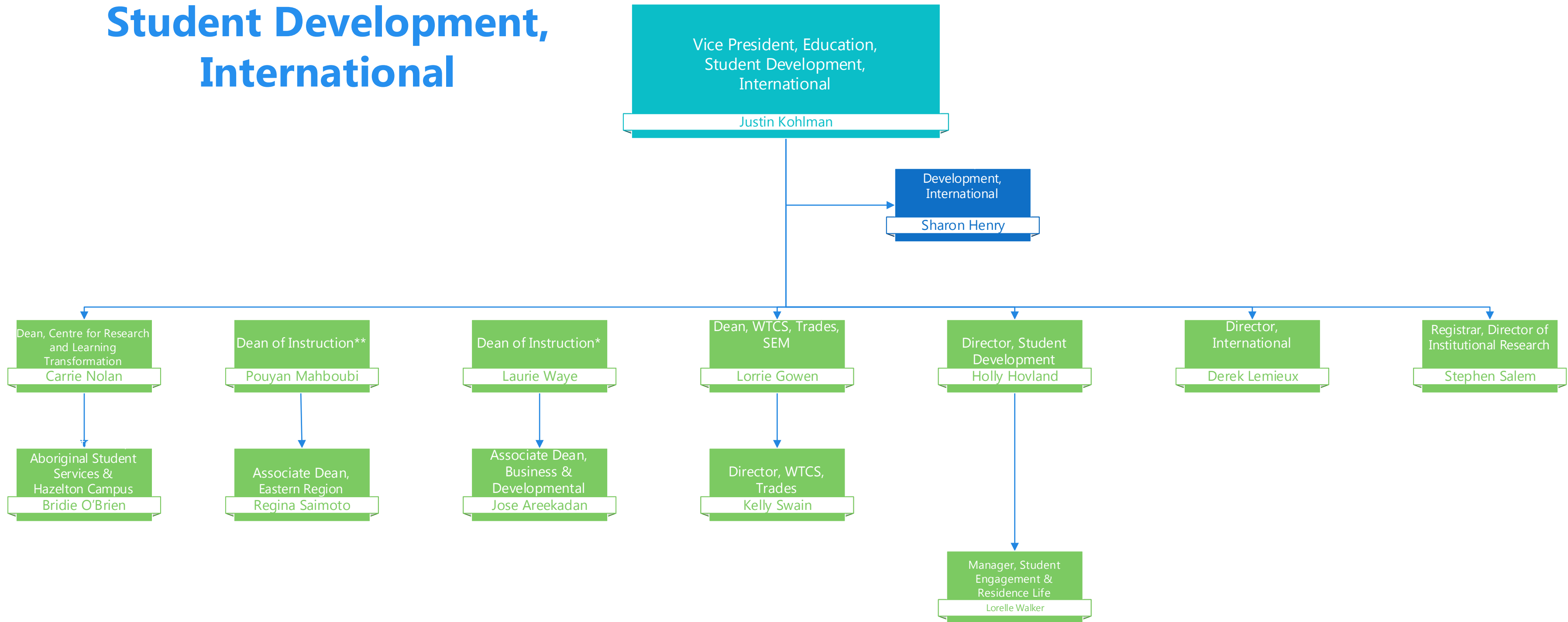
# President's Office



# Vice President, Corporate Services



# Vice President, Education, Student Development, International



\* Portfolio: Business Administration (ABT, Public);  
CCP, ABE, ESL, Literacy, Libraries  
\*\*Portfolio: UC, ACE, CRIM, SSW, ECE, FNFA, HCA,  
NCBNP, PN, ICMH, HLPR, SEA