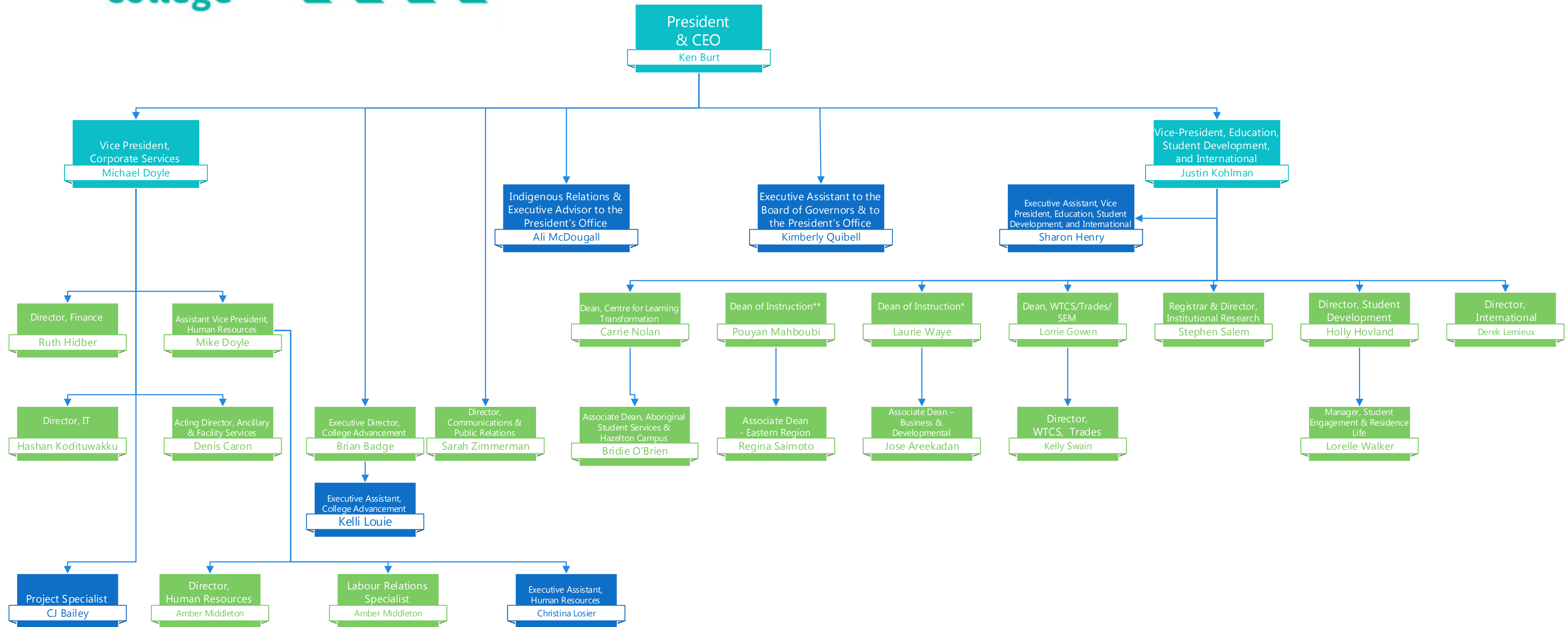




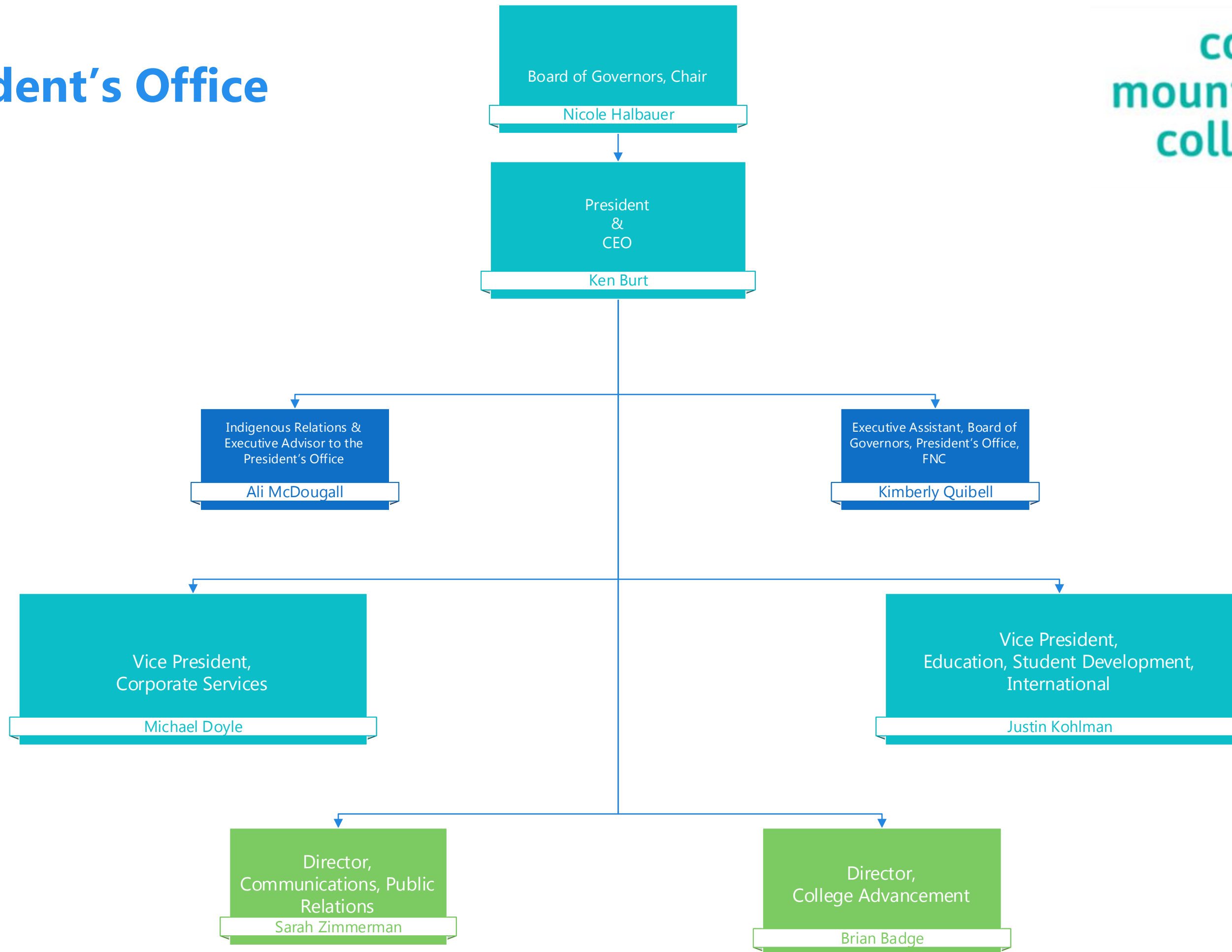
MANAGEMENT DIRECT REPORTS

June 2018

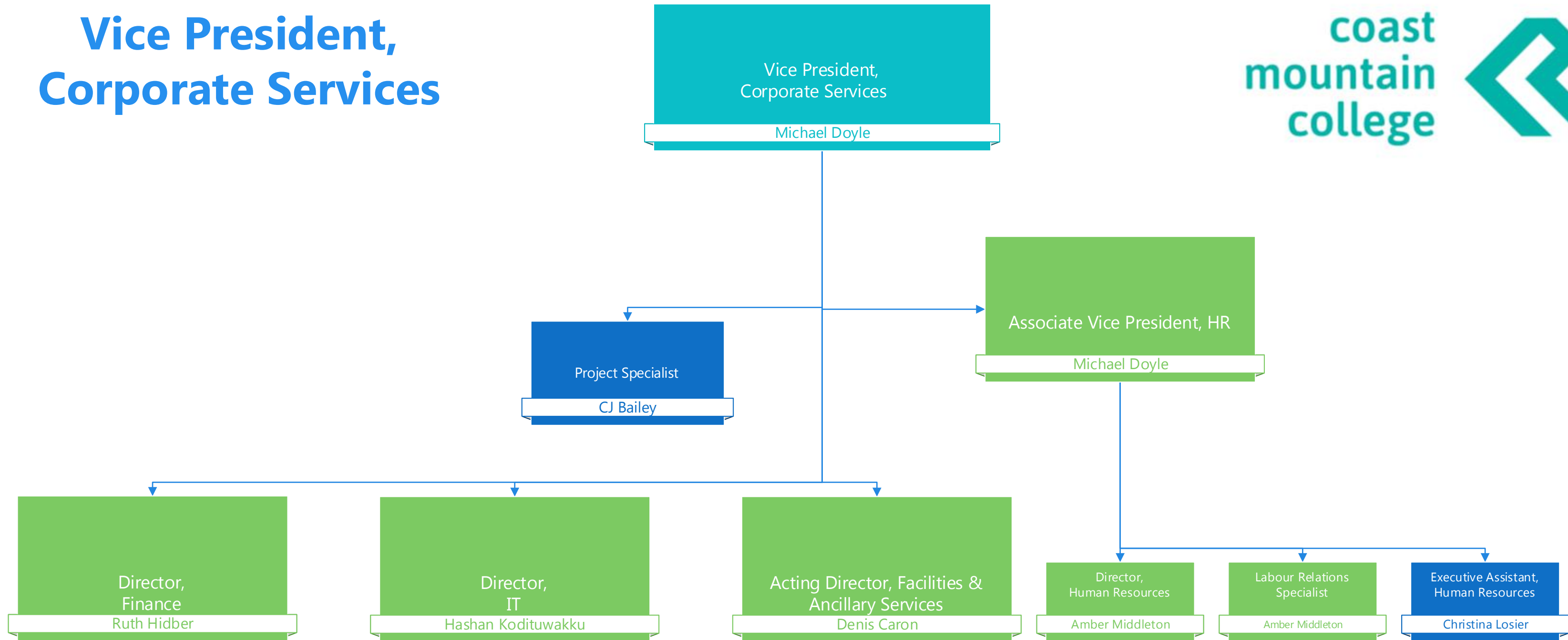


* Portfolio: Business Administration (ABT, Public);
CCP, ABE, ESL, Literacy, Libraries
**Portfolio: UC, ACE, CRIM, SSW, ECE, FNFA, HCA,
NCBNP, PN, ICMH, HLPR, SEA

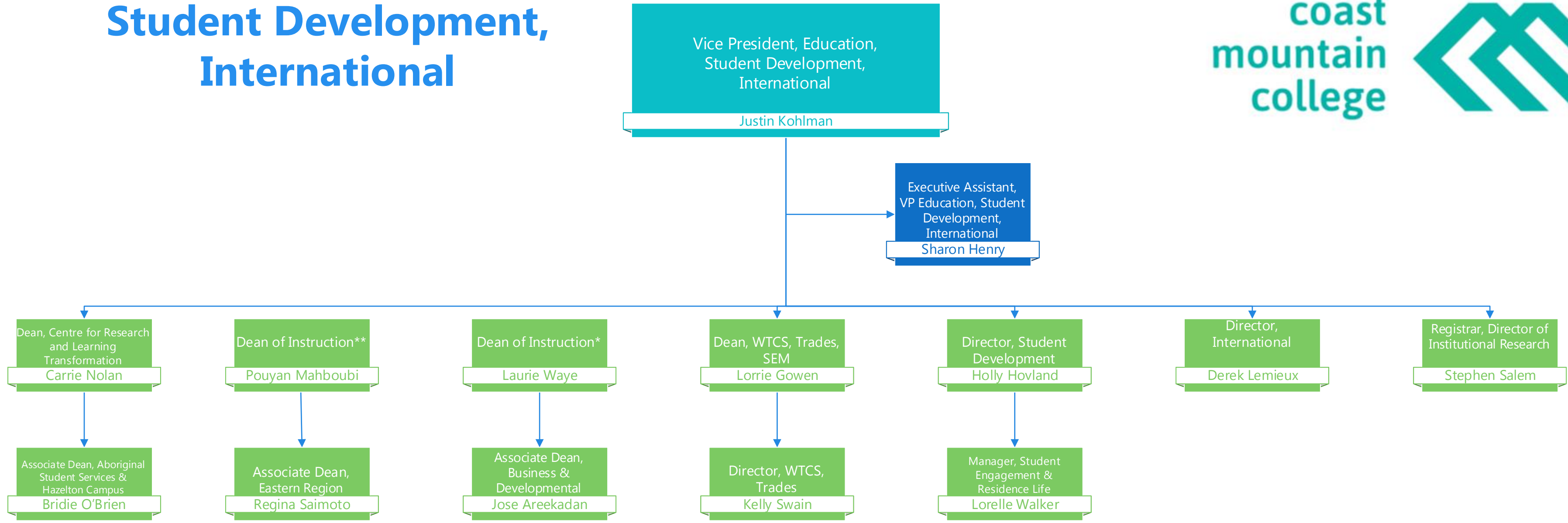
President's Office



Vice President, Corporate Services



Vice President, Education, Student Development, International



* Portfolio: Business Administration (ABT, Public);
CCP, ABE, ESL, Literacy, Libraries
**Portfolio: UC, ACE, CRIM, SSW, ECE, FNFA, HCA,
NCBNP, PN, ICMH, HLPR, SEA